



Carr. 869, Calle 4 Las Palmas Industrial Park, Cataño, Puerto Rico 00962

Tel. 787-641-2420

Sterling SSU2-48-12 Two Door Stainless Steel Refrigerated Sandwich Prep Table

Model: SSU2-48-12



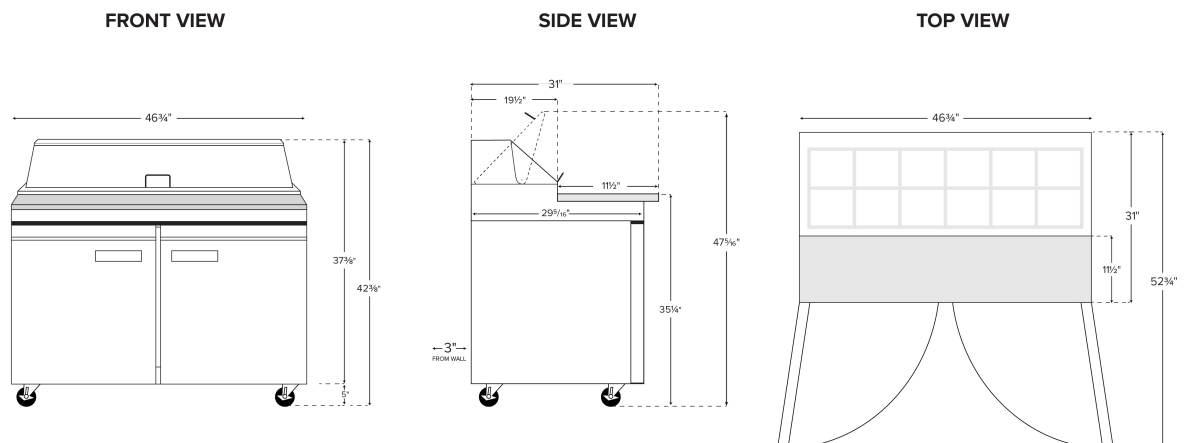
Technical Data

Width	46 3/4 Inches
Depth	35 Inches
Height	45 7/8 Inches
Power Cord Length	84 Inches
Interior Width	42 7/8 Inches
Left Door Opening Width	19 3/8 Inches
Nominal Width	48 Inches
Right Door Opening Width	19 3/8 Inches
Cutting Board Depth	8 Inches
Interior Depth	23 3/4 Inches

Features

- Features an aluminum interior with 304 stainless steel floor
- Top holds up to (12) 1/6 size, 6" deep food pans (sold separately)
- Two self-closing swing doors with recessed handles
- Includes a removable full length, 11 1/2" deep cutting board
- 115V, 1/2 hp; 2.4 Amps

Dimensions



Technical Data

Interior Depth	23 3/4 Inches
Height with Lid Open	47 5/16 Inches
Interior Height	23 1/2 Inches
Work Surface Height	35 1/4 Inches
Amps	2.4 Amps
Hertz	60 Hertz
Phase	1 Phase
Voltage	115 Volts
1/6 Size Pan Capacity	12 Pans
Access Type	Doors
BTU (LBP)	1285 BTU
Capacity	12 cu. ft.
Casters	With Casters
Compressor Location	Rear Mounted
Compressor Style	Side / Rear Breathing
Construction	Stainless Steel and Aluminum
Door Style	Swing
Door Type	Solid
Features	Removable Magnetic Door Gaskets
Hinge Location	Left/Right
Horsepower	1/2 HP
Individual Shelf Capacity	88 lb.
Number of Doors	2 Doors
Number of Shelves	2 Shelves
Plug Type	NEMA 5-15P
Refrigerant Capacity	3.9 oz.
Refrigerant Type	R-290
Refrigeration Type	Air Cooled
Style	Counter Height
Temperature Range	33 - 40 Degrees F
Top Type	Standard Top
Type	Prep Refrigeration

Certifications



5-15P



ETL, US & Canada



ETL Sanitation

OLDACH
REFRIGERATION, AIR CONDITIONING & VENTILATION SUPPLIER

www.sterlingprofessionalpr.com

